



# Biological Sludge

---

## *MS Style Screw Press*

**Dan Berner**, Director of Press Technologies

[dpberner@komline.com](mailto:dpberner@komline.com)



*The Komline Group designs, engineers and delivers a comprehensive platform of technologies that create clean water, food, and sustainable chemicals and materials.*

- Treating Water & Wastewater
- Food & Beverage Processing
- Chemical & Pharmaceutical Processing

## Water & Process



## Agricultural & Renewables

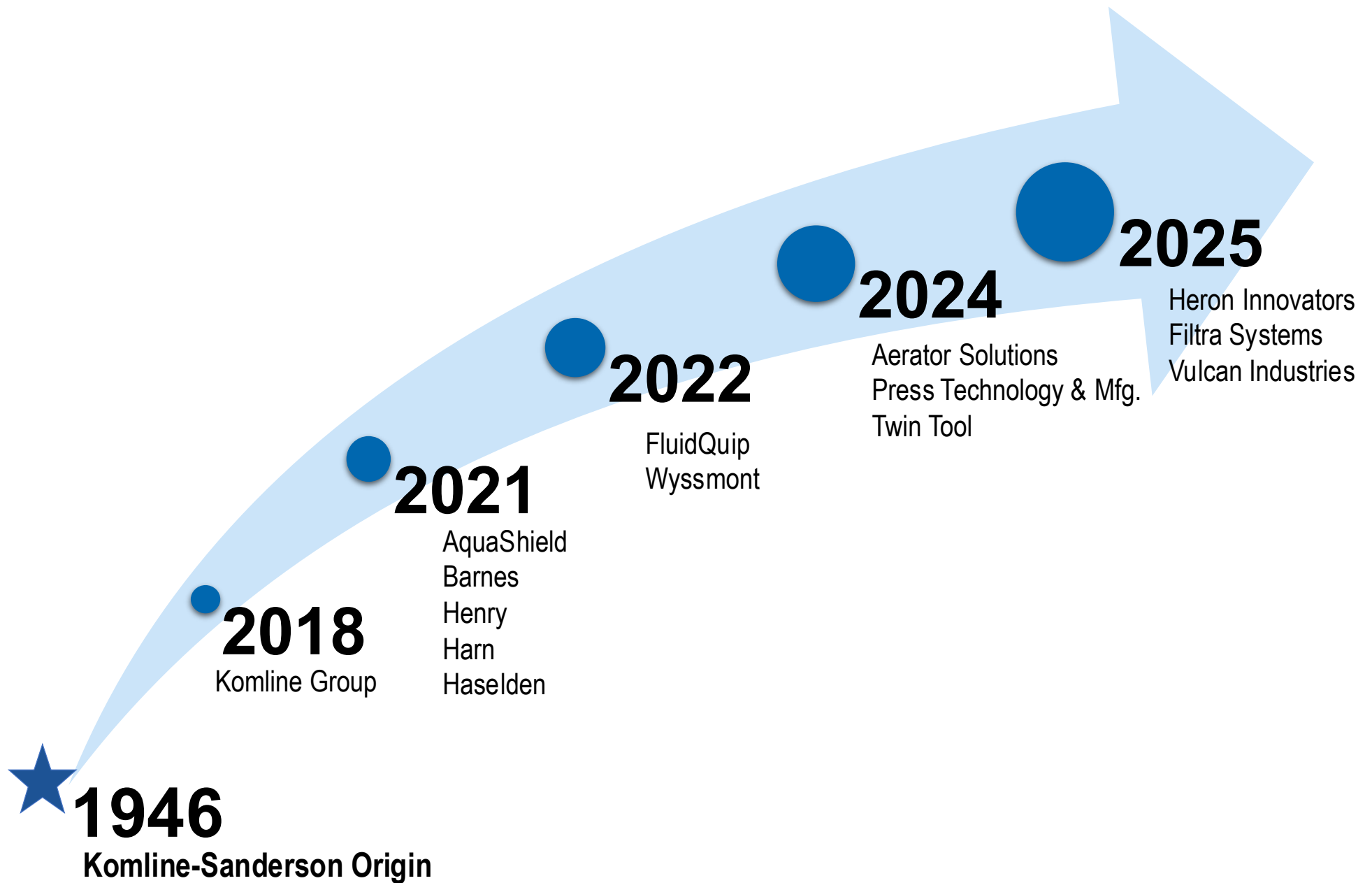


- Processing Agricultural Products
- Producing Renewable Fuels
- Scrubbing Flue Gas

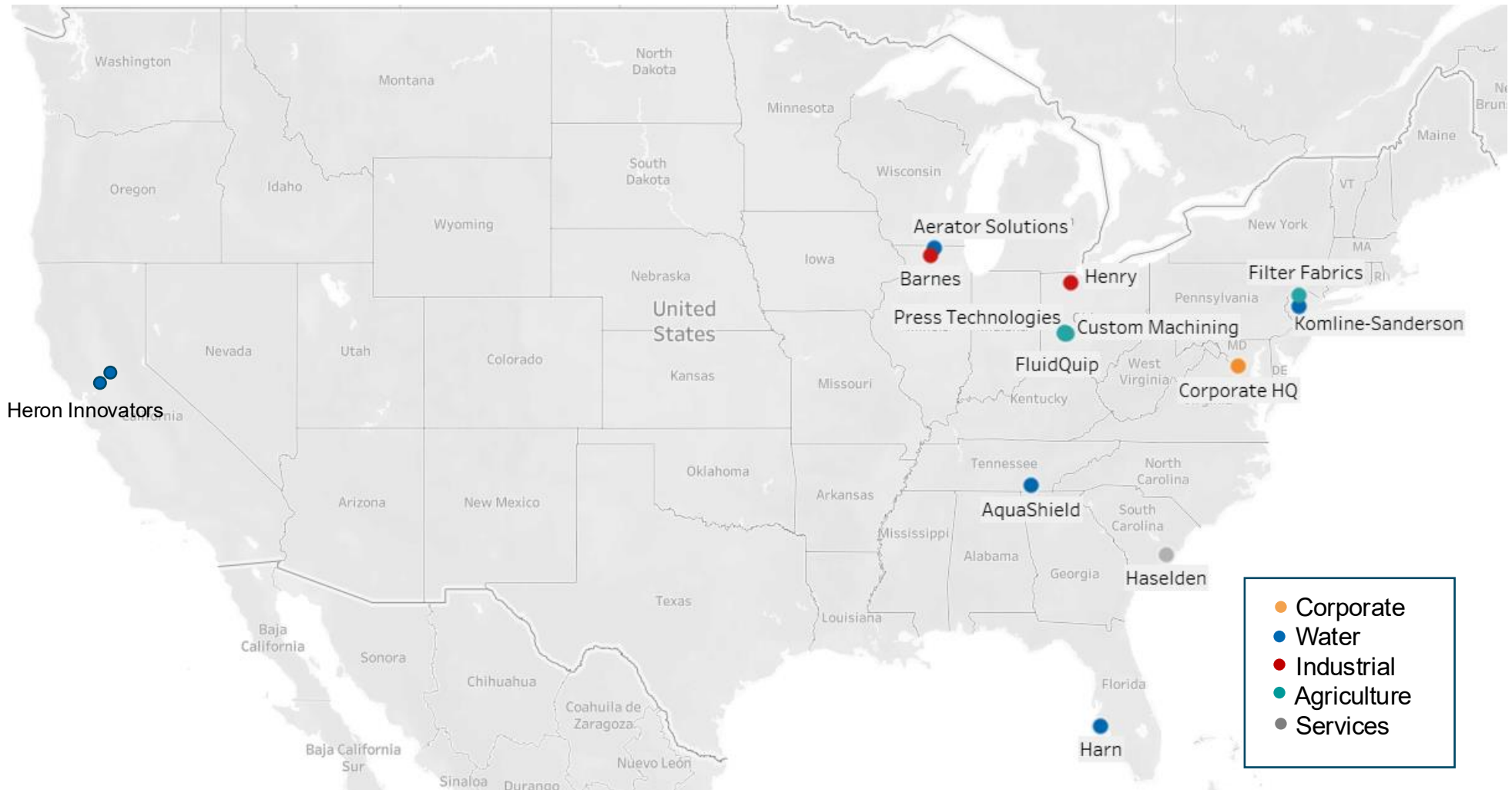
- Filtering Machine Tool Coolant
- Filtering Parts Wash Fluid
- Filtering Roll & Tube Mill Coolant

## Industrial Coolants





# American-based Organization



**100K+**

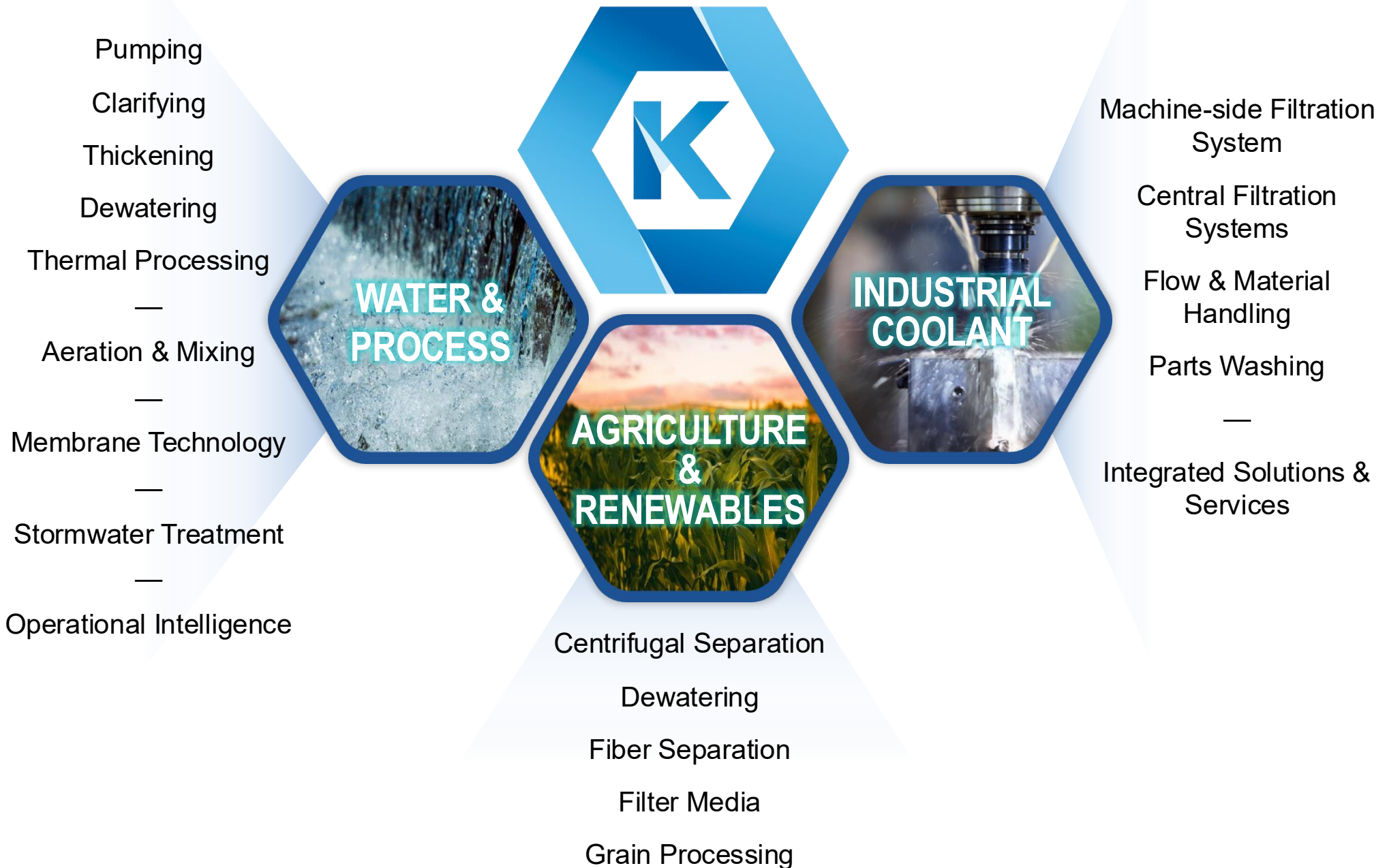
Number of installations

**11**

Manufacturing Facilities

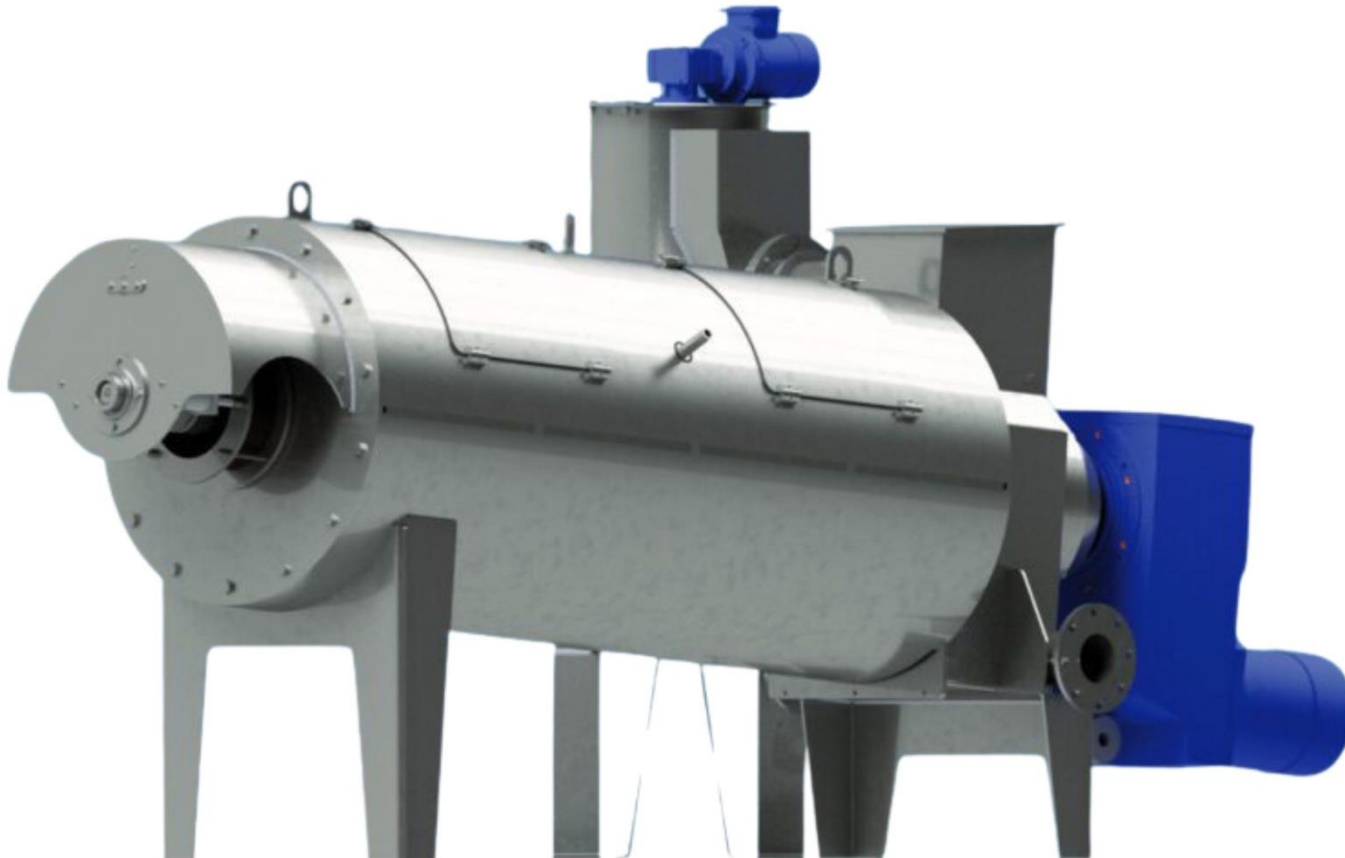
**70%**

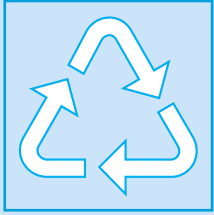
Leadership Team with Engineering Degrees



# MS Style Screw Press

## Low-Friction Dewatering Applications





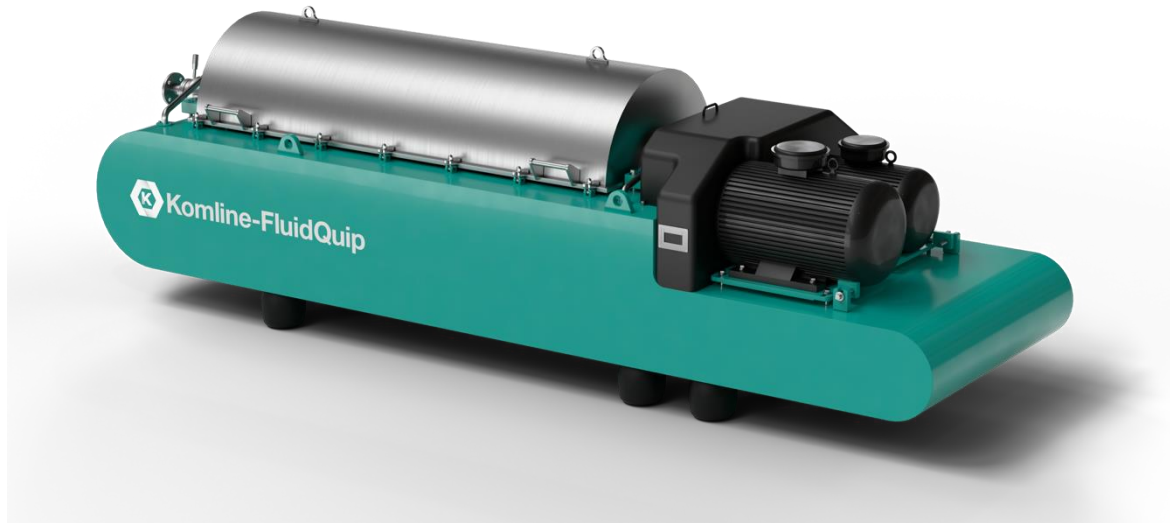
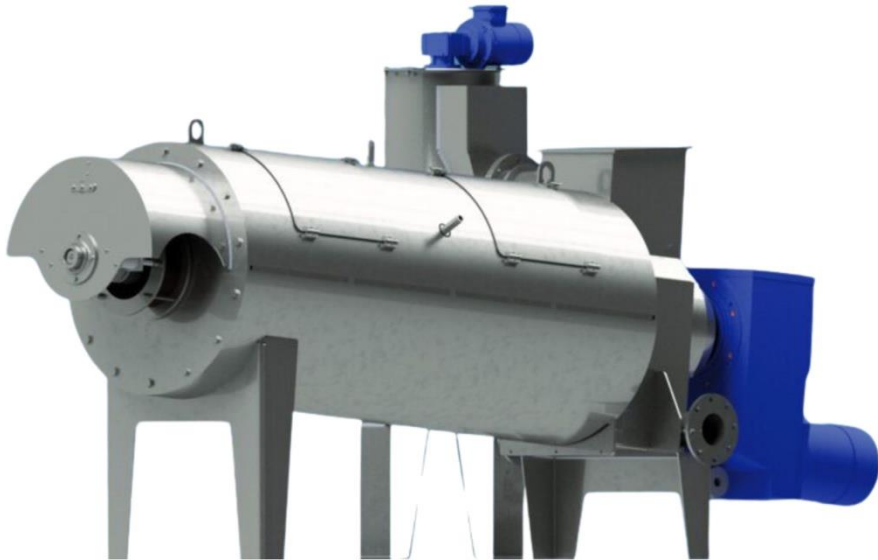
Primary Sludge – Raw feces and organic material



Secondary Sludge – waste activated sludge from clarifiers.



Digested Sludge – Anaerobic / Aerobic bacteria breaking down organic material into methane or carbon dioxide.





- **90%** Energy Reduction
- **90-75%** Reduced Maintenance Cost
- **95%** Capture Rates
- **Up to 80%** Less Shower Water
- **15-25%** Discharge Solids
- Enclosed system minimizes off-gassing
- No Pre-thickeners Required
- Reduced Operator Attention
- No Metal-to-Metal Contact
- No Screw Flight Brush Required

# MS Style Screw Press Results



Cake Solids % - Primary Raw	12-24%
Cake Solids (%) Anaerobic Digested	22-34%
Solids Feed (%)	1-4%
Solids Capture	90-98%
Polymer (lb Active/Dry Ton)	15-30
Flow Rates (GPM/unit)	1-150

\*Rates will vary based on sludge type

# 24-hour Capacities for Municipal Sludge



MS600 .0.5 Dry Tons – 2% Solids

MS1200 1.5 Dry Tons – 2% Solids

MS1800 5 Dry Tons – 2% Solids

MS2200 8.5 Dry Tons – 2% Solids

MS2800 18 Dry Tons – 2% Solids

MS3600 26.5 Dry Tons – 2% Solids

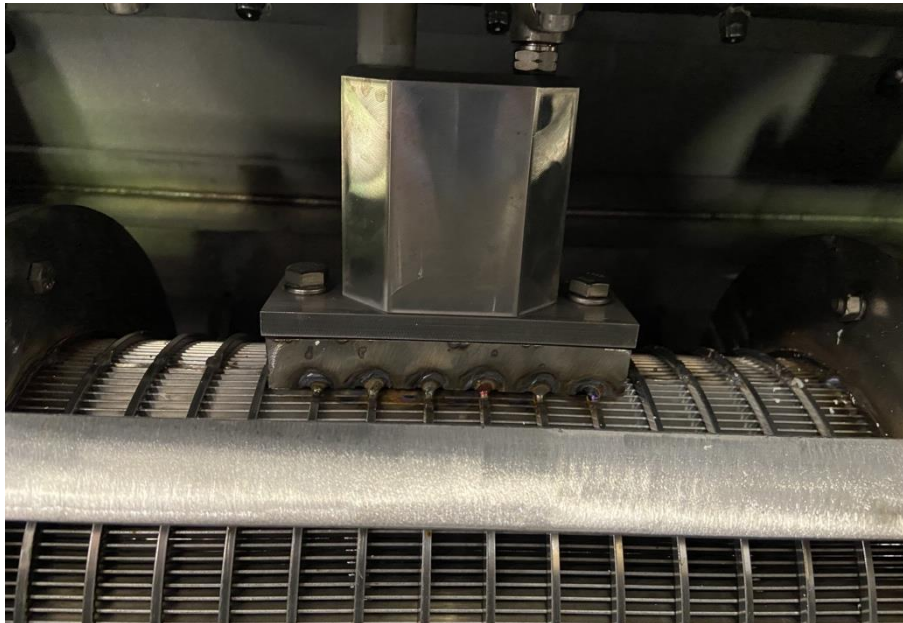
\*Capacities will vary based on inlet consistency and sludge type

- Automatic Screen Basket Cleaning: Once every hour, manual once per week.
- Lubricate Bearings: 1x/week
- Gearbox Oil: 1x/year
- Screw Shaft Rebuild: 7-10 years
- Replace Bearings: 7-10 years
- Replace Seals: 3-4 years

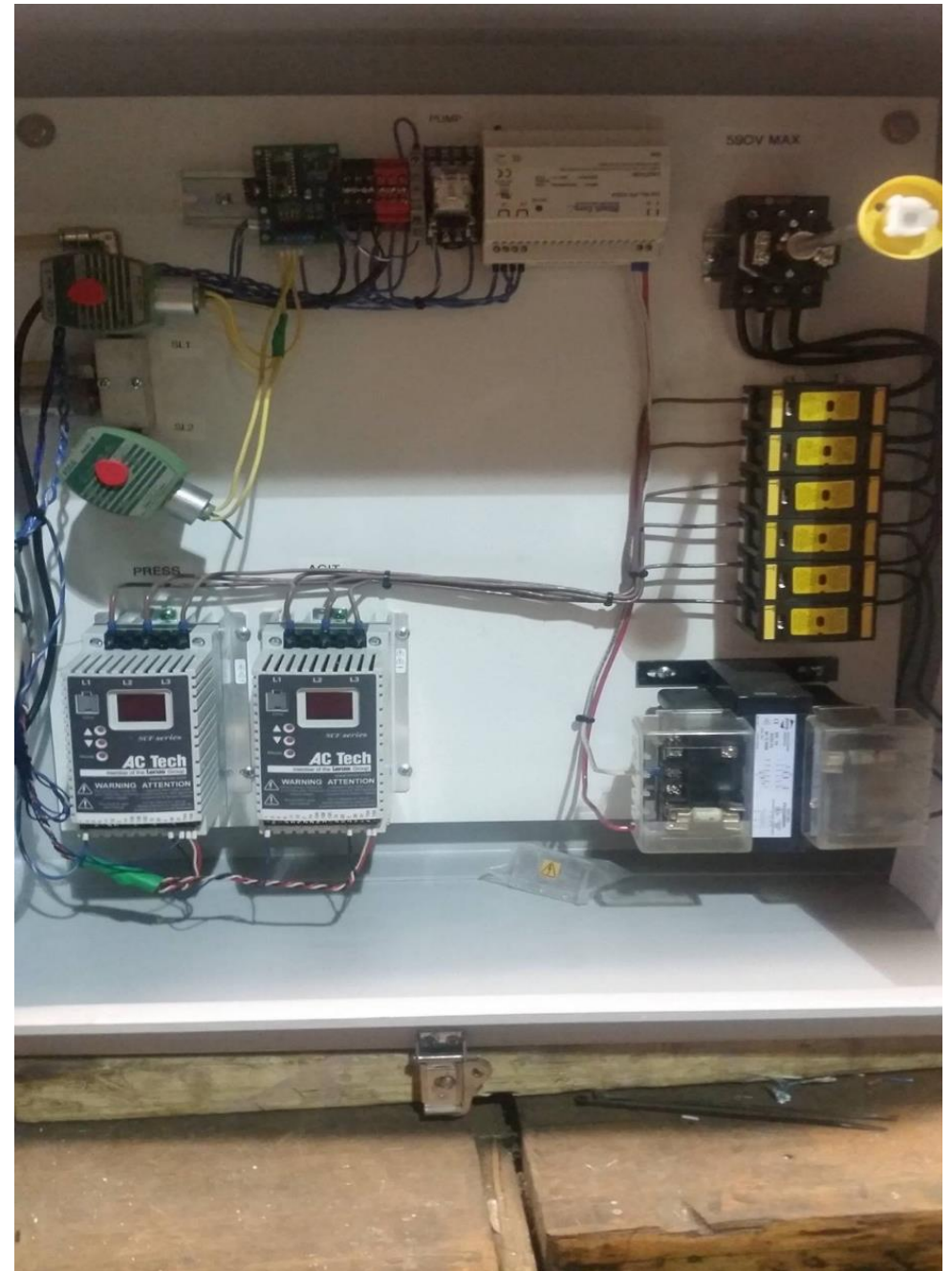
# Features of the MS Style Screw Press



- Pneumatic Vibration for Screen Cleaning
- Gradual Reducing Academes Screw = No Brush
- Perforated and Slotted, Multi-sized Screen Baskets Available
- 0.3 HP per dry ton
- Totally Enclosed Reduced Odors
- Pneumatic Driven Back Pressure Cone
- Automatic Shower
- Shaft Mounted Gear Reducer, low HP
- Touch Screen Embedded Control - Nema 4 panel



# Touch Screen Embedded Control - VFD





*Parts*



*Service*



*Installation*

## Contact us:

---

**Dan Berner**

*Director of Press Technologies*

[dpberner@komline.com](mailto:dpberner@komline.com)

